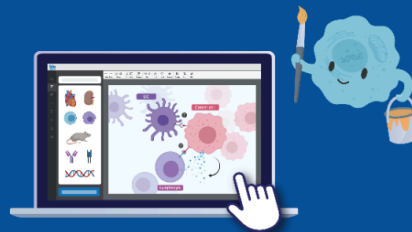


BioRender 101

Professional Science
Figures in Minutes



BioRender is hosting an introductory webinar **exclusively for the students, researchers and all BioRender users at the University of Nebraska, Lincoln — Department of Food Science and Technology.**

Webinar Details

Title: BioRender 101: Getting Started With BioRender @ **University of Nebraska, Lincoln — Department of Food Science and Technology.**

About the session: This webinar includes a brief introduction to the BioRender software. During this 60-minute webinar, gain valuable insights and practical techniques for creating compelling science figures for use in posters, presentations, publications, and more. The session will also provide an overview of the BioRender platform including an introduction to Illustration, PowerPoint integration, Poster Builder, and Graphing features.

Date: Tuesday, September 2nd at 3:00pm CEST

[Click Here to Register](#)

Registration link doesn't work? Linked [here](#) too.

Frequently Asked Questions

I can't attend the live session - can I get a recording?

This webinar will be recorded. Register for the webinar anyway to receive a video link!

How do I sign up for BioRender Premium Access?

To request access to the **University of Nebraska, Lincoln — Department of Food Science and Technology** BioRender account, please contact Susie Fauble at sfauble2@unl.edu.

What is BioRender?

BioRender is a web-based program that helps you create scientific figures up to 50x faster than traditional tools. The tool combines a library of over 50,000 scientifically accurate, expert-validated life science icons and templates with intuitive drag-and-drop functionality. Create publication-quality figures in minutes - no drawing skills required!

Join your colleagues already using BioRender Premium to create scientific illustrations, graphs and posters, taking your visual communication to the next level!

How can I get assistance with BioRender?

If you are experiencing any technical issues you can contact our Customer Experience Team via the **Help** button in the BioRender app, or by emailing support@biorender.com.