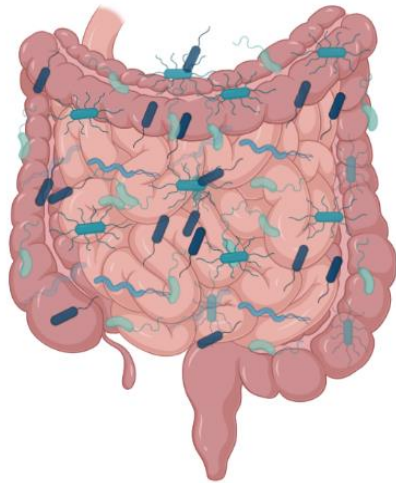




# PARTICIPATE IN A STUDY ON BEANS AT THE UNIVERSITY OF NEBRASKA-LINCOLN!

We are studying how different types of **beans impact health** by affecting the millions of microbes in the gut.



**We are actively recruiting study participants!**

The study involves 16 visits to the  
**UNL-Food Innovation Center**  
at 1901 N 21st Street.

You will receive up to \$300 for participating.



Scan to see if  
you qualify:



Contact us at ***guthealth@unl.edu*** to learn more!